

Registered Actively Seeking Work

March 2015

Statistics Unit: www.gov.je/statistics



Summary

On 31 March 2015:

- on a **seasonally adjusted**¹ basis, the total number of people registered as actively seeking work (ASW) was²:
 - essentially unchanged from the previous month (February 2015);
 - similar to the average (mean) for the preceding three months;
- the **non-seasonally adjusted ASW total** was 1,560; this total is 60 lower than the previous month (February 2015) and 170 lower than twelve months earlier (March 2014);
- **long-term ASW** (registered for more than twelve months) accounted for around one in eight (13%) of total ASW, and was the lowest number recorded for almost four years (April 2011);
- 180 teenagers (aged 16-19 years) were registered as ASW, 30 fewer than the previous month (February 2015) and 60 fewer than twelve months earlier (March 2014);
- most age groups recorded small decreases of around 10 to 20 individuals in the number of people registered as ASW compared with the previous month (February 2015); in contrast, an increase of 20 persons was seen for the 30-34 years age group.

Introduction

Data on people registered as actively seeking work in Jersey is compiled and administered by the Social Security Department. The Statistics Unit independently analyses this anonymised data and publishes a monthly report.

When interpreting the numbers presented, it should be noted that there is no legal requirement for unemployed residents of Jersey to register as actively seeking work (ASW) with the Social Security Department. The numbers shown constitute an informative set of indicators demonstrating the level of individuals actively seeking work in the Island at a given point in time.

The internationally comparable unemployment rate (as defined by the International Labour Organisation, ILO) includes people who are registered and also those who are not registered as unemployed and seeking work. The ILO unemployment rate for Jersey is measured by the Annual Social Survey and the Census; in recent years, the ILO unemployment rate for Jersey has been:

- 4.7% in March 2011, measured by the 2011 Jersey Census; this unemployment rate corresponded to 2,570 people being unemployed and looking for work in March 2011;
- 5.7% in June 2013, measured by the 2013 Jersey Annual Social Survey; this unemployment rate corresponded to 3,200 people being unemployed and looking for work in June 2013;
- 4.6% in June 2014, measured by the 2014 Jersey Annual Social Survey; this unemployment rate corresponded to 2,800 people being unemployed and looking for work in June 2014.

¹ Seasonal adjustment is a statistical technique which enables examination of the underlying behaviour in a series of data by removing variations associated with the time of year, e.g. Christmas, Easter, academic year.

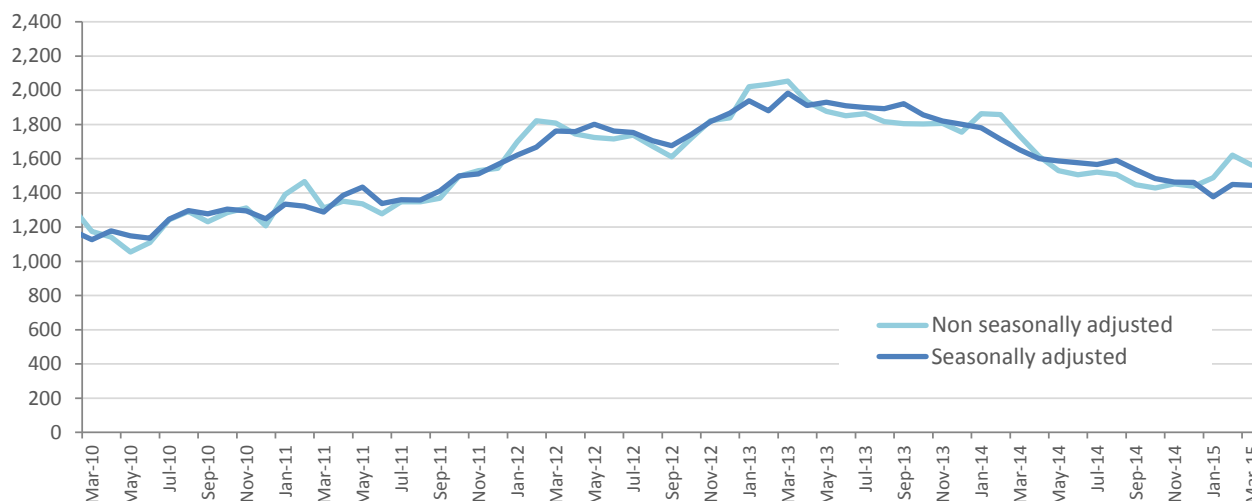
² ASW numbers presented in this report are rounded independently to the nearest 10.

Registered Actively Seeking Work

On 31 March 2015, 1,560 people were registered with the Social Security Department as actively seeking work (ASW). Nearly three-quarters (74%) of individuals registered as ASW on this date (corresponding to 1,150 people) were receiving Income Support³.

Figure 1 shows the total number of people registered as ASW at the end of each month since March 2010 (monthly data are shown in the Appendix). The total number registered in March 2015 was 60 lower than in the previous month (February 2015) and 170 lower than twelve months earlier (March 2014).

Figure 1 – Total number of individuals registered as ASW, Mar 2010 – Mar 2015



The seasonally adjusted series of the total registered as ASW, in which seasonal and calendar effects are removed, is also shown on Figure 1. From this perspective, the total number of people registered as ASW in Jersey in March 2015 was:

- essentially unchanged from the previous month (10 lower than in February 2015);
- similar to the average (mean) for the preceding three-month period (10 higher than the mean for December 2014 to February 2015);
- 210 lower than a year earlier, March 2014.

It should be noted that an increase was seen in both the seasonally adjusted and non-seasonally adjusted ASW totals in February 2015 compared with January 2015 due predominantly to a change in the Income Support criterion relating to Long-Term Incapacity Allowance (LTIA)⁴.

Registered ASW by age

On 31 March 2015, more than a fifth (22%) of people registered as ASW were under 25 years of age (350 individuals); around one in eight (12%) of the total were teenagers, aged 16-19 years.

Figure 2 shows the numbers registered as ASW by age of individuals in each of the last six months, from October 2014 to March 2015.

In the latest month, most age groups recorded small decreases of around 10 to 20 individuals in the number of people registered as ASW compared with the previous month (February 2015). In contrast, an increase of 20 persons was seen for the 30-34 years age group.

³ The total number of adults receiving Income Support and not working will be greater than this figure, which represents the number of people receiving Income Support who were registered as ASW on 31 March 2015.

⁴ On 23 February 2015 the threshold for the cumulative LTIA percentage rate was increased from 35% to 40%; members of an Income Support claim below the threshold are required to seek employment. Raising the LTIA threshold resulted in an additional 90 individuals being registered as ASW at the end of February 2015 compared with the previous month.

Figure 2 – Individuals registered as ASW by age, Oct 2014 – Mar 2015

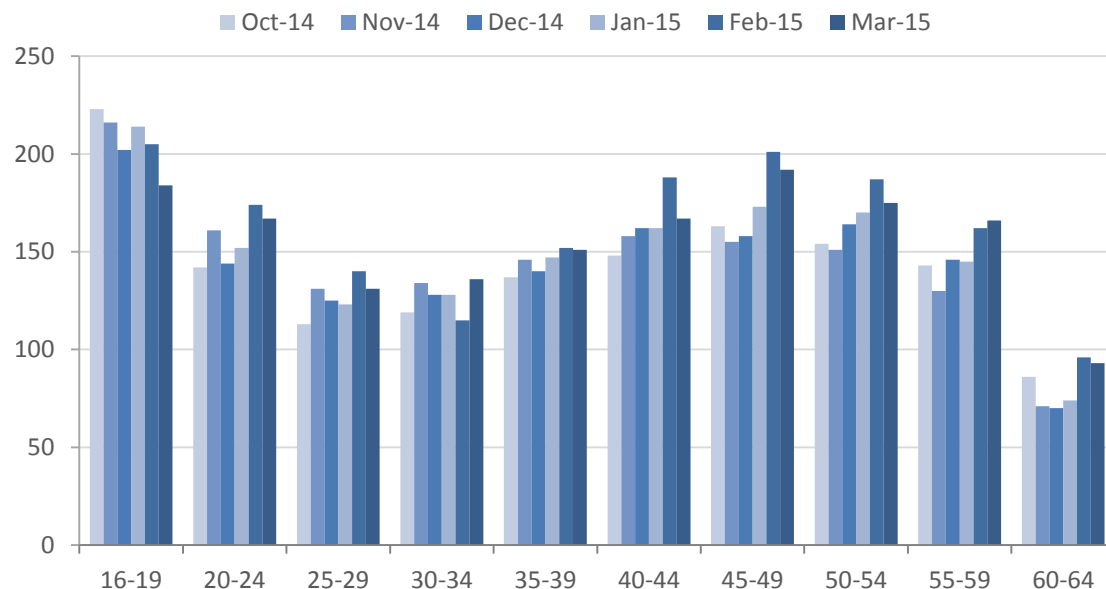
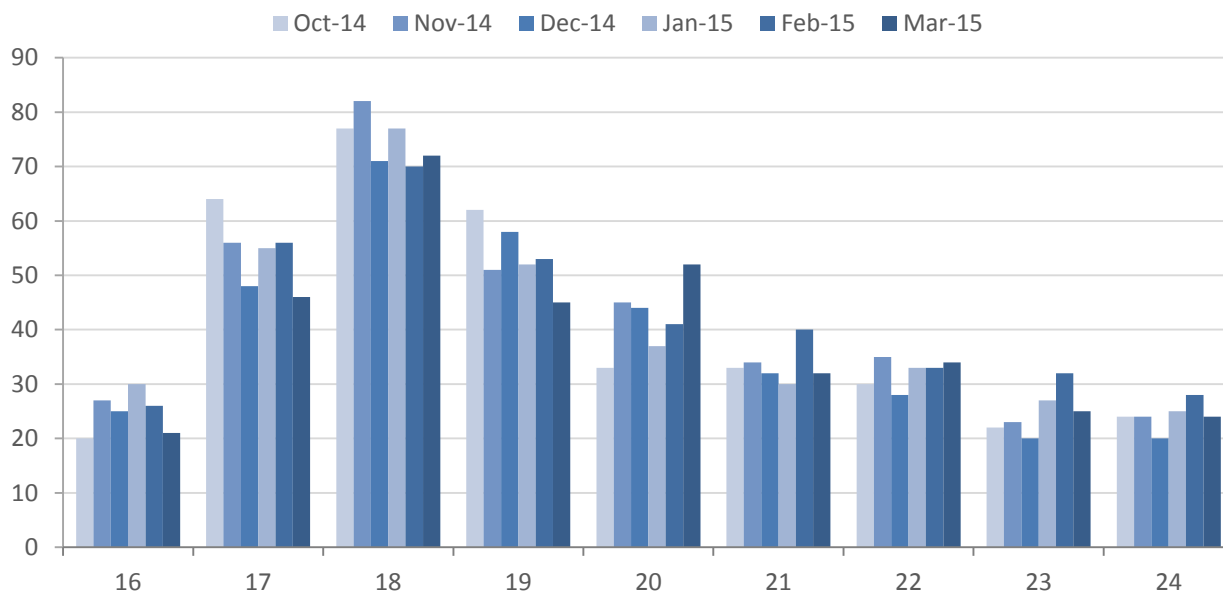


Figure 3 shows the age distribution for people below 25 years of age who were registered as ASW in the latest six months, from October 2014 to March 2015.

180 teenagers (aged 16-19 years) were registered as ASW at the end of March 2015, around 30 fewer than the previous month (February 2015) and 60 fewer than twelve months earlier (March 2014).

Of those teenagers registered as ASW at the end of March 2015, 110 were on the Advance to Work scheme.

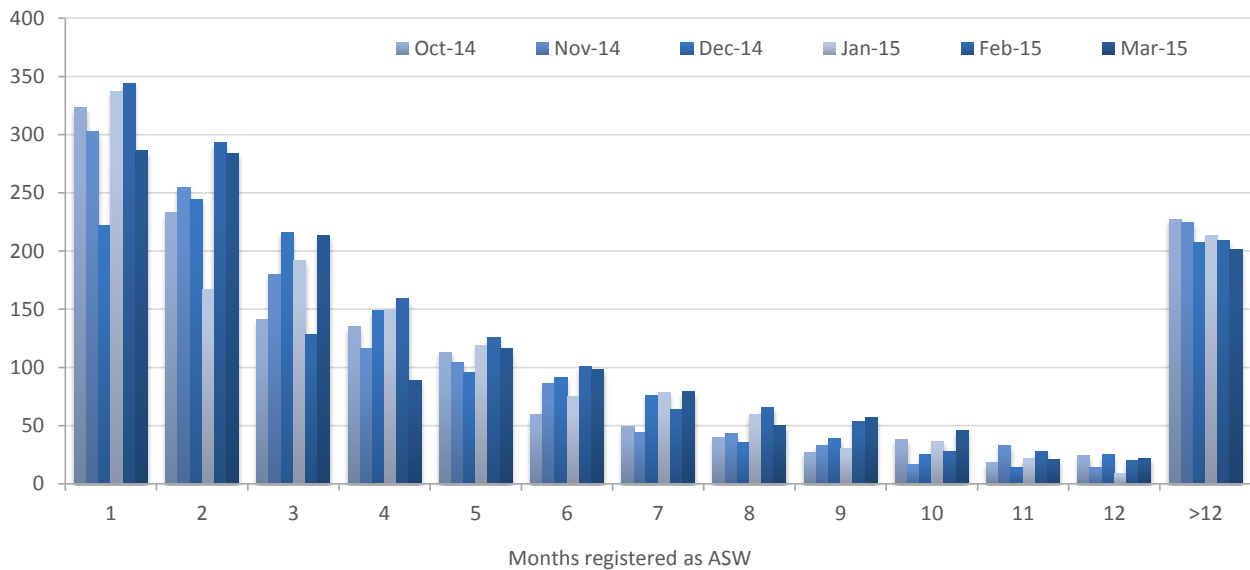
Figure 3 – Individuals under the age of 25 registered as ASW, Oct 2014 – Mar 2015



ASW duration

Half (50%) of all people registered as ASW on 31 March 2015 had been registered for three months or fewer – see Figure 4.

Figure 4 – Registered ASW by length of period registered (months), Oct 2014 – Mar 2015



The number of new registrations in March 2015 (290 people) was 50 fewer than that recorded in the previous month (February 2015).

Long-term ASW

On 31 March 2015, there were 200 people who had been registered as ASW for more than twelve months, accounting for around one in eight (13%) of the total ASW.

The latest number of long-term ASW was around 10 fewer than in each of the previous two months, and was the lowest number recorded for almost four years, since April 2011 - see Figure 5.

Figure 5 – Long-term ASW, Mar 2010 – Mar 2015

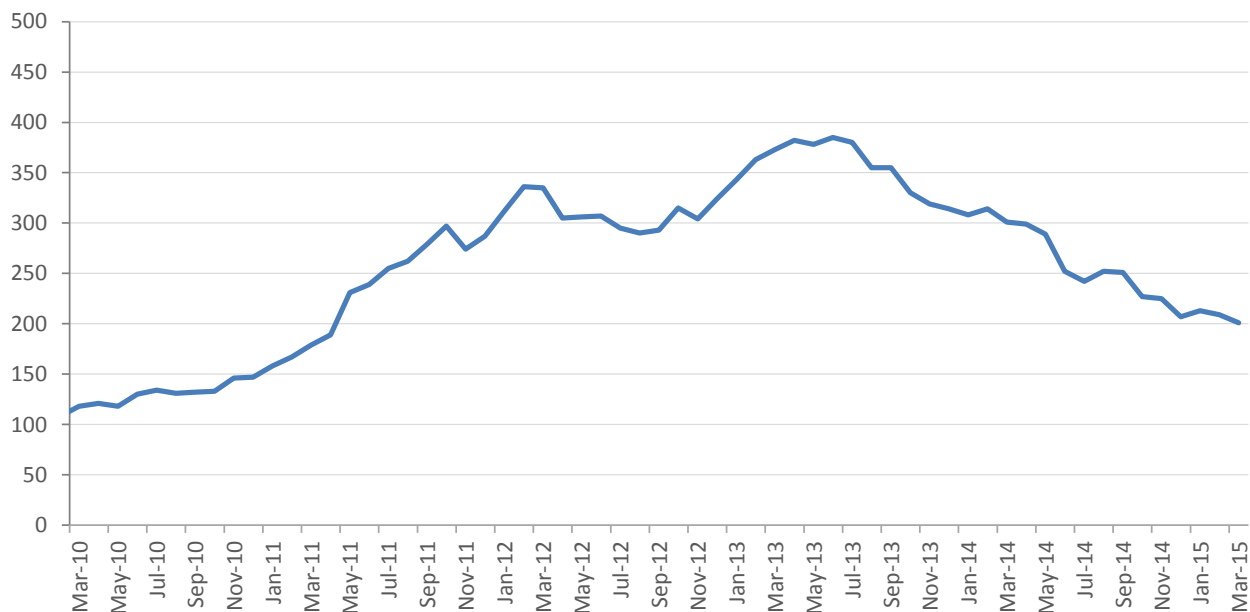
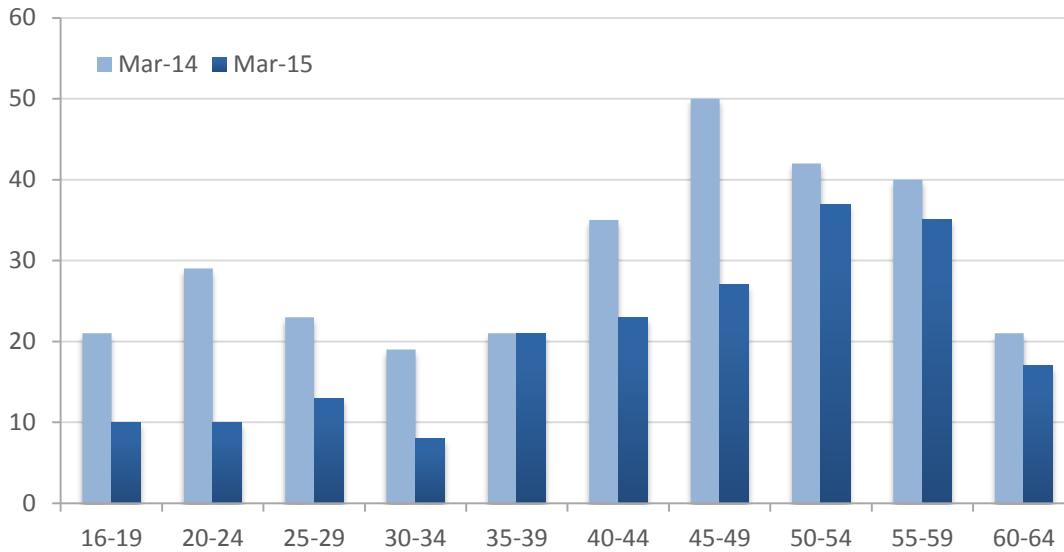


Figure 6 shows the age distribution of the long-term ASW in March 2014 and March 2015. All age groups have seen falls in the number of long-term ASW during the past twelve months, except for the 35-39 years old age group which is relatively unchanged.

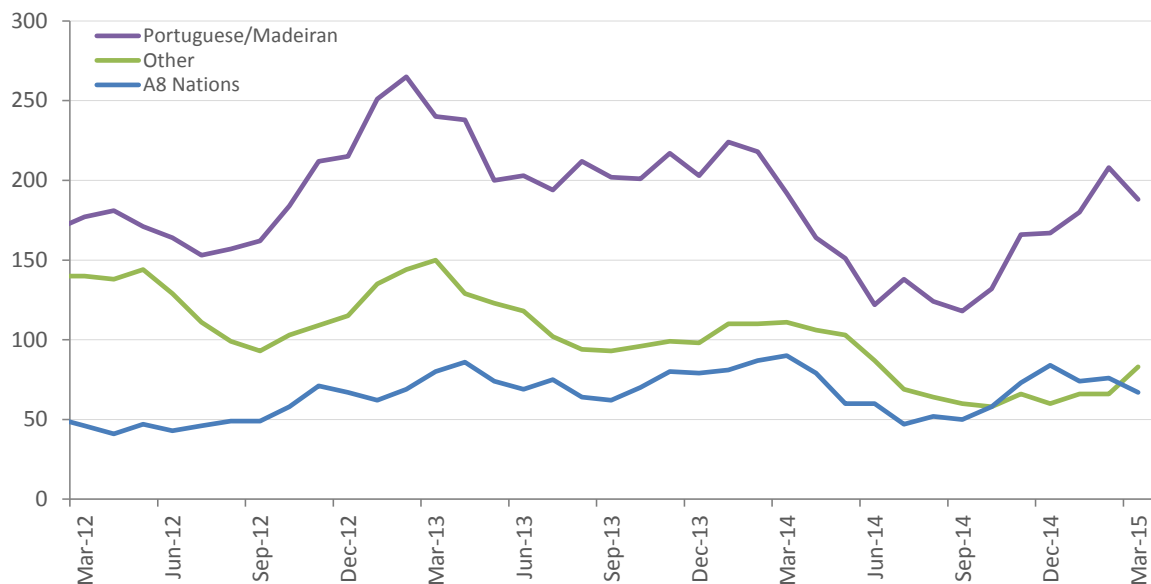
Figure 6 – Long-term ASW by age, Mar 2014 and Mar 2015



Registered ASW by Nationality

On 31 March 2015, almost four-fifths (78%) of people registered as ASW were of British/Jersey nationality⁵; there was a decrease of 50 such individuals compared with the previous month.

Figure 7 – Individuals registered as ASW by nationality, Mar 2012 – Mar 2015



On 31 March 2015 there were:

- 190 individuals of Portuguese/Madeiran nationality registered as ASW, 20 fewer than the previous month (February 2015) and a similar number to that in the corresponding month of 2014;
- 70 individuals from the EU Accession (A8)⁶ nations were registered as ASW, 10 fewer than the previous month (February 2015) and 20 fewer than in the corresponding month of 2014.

⁵ Nationality recorded by the Social Security Department for the purpose of registering as ASW is self-reported.

⁶ The eight countries which joined (“gained accession to”) the European Union in May 2004 were: the Czech Republic, Estonia, Hungary, Latvia, Lithuania, Poland, Slovakia and Slovenia.

Industry

Individuals working in some industries of the economy, notably in the Finance sector, often seek employment through private agencies and do not register with the Social Security Department. Such industries will, therefore, tend to be under-represented in the ASW numbers.

The last industry of employment was recorded for around nine out of ten people registered as ASW on 31 March 2015:

- a fifth (21%) were previously employed in 'Retail and Wholesale, Motor repairs and sales';
- a sixth (17%) were previously employed in 'Miscellaneous professional & domestic services';
- 15% were previously employed in 'Hotels, restaurants, pubs and clubs';
- 15% were previously employed in 'Banking, Miscellaneous Insurance, Finance and Business.

Notes

The number of people registered as ASW includes people who are on the Advance to Work, Advance Plus and Work Right schemes. The ASW total will also include individuals who are working fewer than the 35 hours per week required under the terms of Income Support (see Annex); such individuals will simultaneously be working and registered as actively seeking work.

When placing the figures contained in this report in a longer term historical context it should be recognised that there have been significant changes in the criteria relating to registered ASW in Jersey in recent years. In particular, the introduction of Income Support in 2008 led to greater numbers of individuals who were actively seeking work being included in the registered figures.

People who are registered as actively seeking work receive the support of one of the government employment schemes which come under the administration of Back to Work:

- Advance to Work – for jobseekers aged 16 - 19 years;
- Advance Plus – for jobseekers aged 20 - 65 years with an industry-specific interest;
- Work Right – for jobseekers with barriers to employment or who have been registered as ASW for 52 weeks or longer;
- Work Zone – for registered jobseekers who are closer to employment;
- Ready for Work – for newly registered jobseekers or jobseekers without a dedicated advisor.

In addition to the development and expansion of these schemes, Back to Work is responsible for:

- the Employment Grant, Hospitality Incentive and Youth Incentive;
- a dedicated Employer Engagement team;
- industry and employer specific initiatives.

The aim of Back to Work is to increase access to job opportunities for locally qualified people who are registered as actively seeking work by supporting jobseekers and building a partnership with employers to provide sustainable job opportunities.

ASW registered underemployment

Individuals who are working fewer hours than they would like or who would like to change their current working situation are classified as underemployed. The International Labour Organisation (ILO) provides two definitions of underemployment⁷:

- *time related underemployed*, which is due to insufficient hours of work;
- *inadequate employment situations*, which are due to other limitations in the labour market which limit the capacities and well-being of workers.

In Jersey, individuals who are in receipt of Income Support are required to work at least 35 hours per week, unless exempt from full-time work; those who do not meet this requirement must register as Actively Seeking Work. Hence, the ASW total figure includes individuals who are working less than the 35 hours per week required under the terms of Income Support. The number of ASW registered underemployed also includes individuals who are on the Foundations programme and engaged in paid work of 30 hours per week; in March 2015 there were 50 such individuals. Both sets of employed individuals will simultaneously be working and actively seeking work, and are classified as underemployed under the ILO definition of *time related underemployment*.

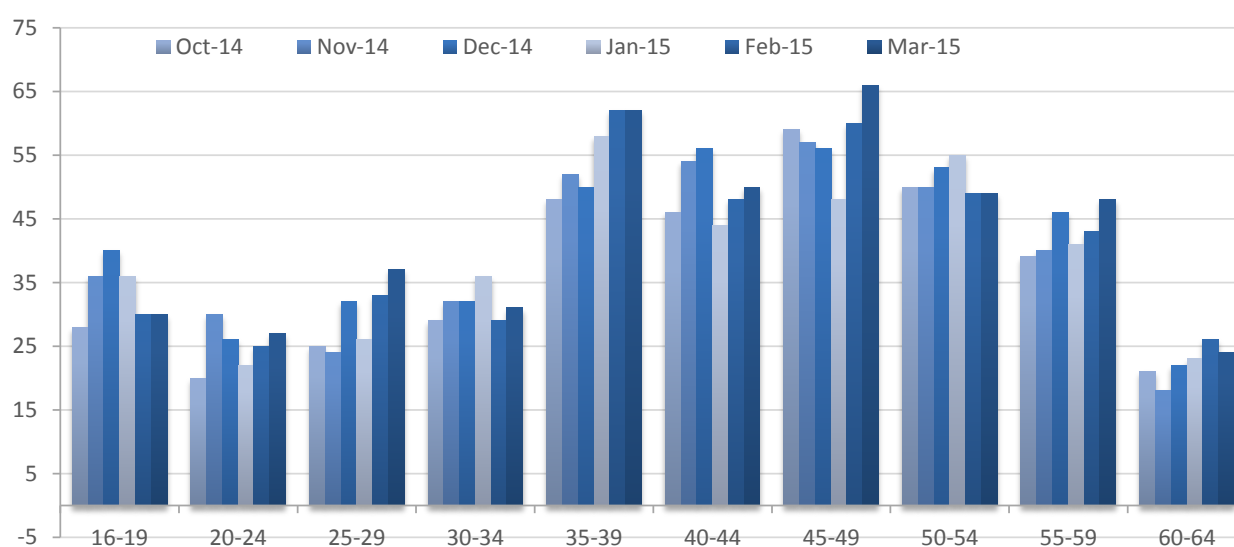
In March 2015, over a quarter (27%) of all people registered as ASW were underemployed, meaning that they were working less than 35 hours per week and were actively seeking more work. The numbers of such individuals in each of the last twelve months are shown in Table A1.

Table A1 – Number of ASW registered underemployed, Mar 2014 – Mar 2015

	Mar-14	Apr-14	May-14	Jun-14	Jul-14	Aug-14	Sep-14	Oct-14	Nov-14	Dec-14	Jan-15	Feb-15	Mar-15
Individuals	340	370	380	350	360	360	360	370	390	410	390	410	420
Percentage of total ASW	20%	23%	25%	23%	24%	24%	25%	26%	27%	28%	26%	25%	27%

Figure A1 shows the age distribution of people registered as ASW underemployed; more than two-fifths (44%) were aged 45 years or over.

Figure A1 - Age distribution of ASW registered underemployed, Oct 2014 – Mar 2015



Of those people who were registered as ASW underemployed in March 2015: three-fifths (61%) were female; over a quarter (28%) had been actively seeking work for more than a year; and more than eight out of ten (85%) were claiming Income Support.

⁷ International Labour Organisation: *Resolution concerning the measurement of underemployment and inadequate employment situations*.

Appendix

Number of individuals registered as ASW, Jan 2010 – Mar 2015⁸

		Male	Female	Total	Seasonally adjusted total
2010	Jan	770	440	1,200	1,150
	Feb	810	510	1,320	1,180
	Mar	720	450	1,170	1,130
	Apr	710	430	1,140	1,180
	May	670	390	1,060	1,150
	Jun	690	420	1,110	1,130
	Jul	760	490	1,240	1,250
	Aug	810	490	1,290	1,300
	Sep	770	460	1,230	1,280
	Oct	840	450	1,290	1,300
	Nov	870	440	1,310	1,290
	Dec	800	410	1,210	1,250
2011	Jan	910	480	1,390	1,330
	Feb	960	510	1,470	1,320
	Mar	850	460	1,310	1,290
	Apr	870	490	1,350	1,390
	May	820	520	1,340	1,430
	Jun	780	500	1,280	1,340
	Jul	800	550	1,350	1,360
	Aug	820	530	1,350	1,360
	Sep	850	520	1,370	1,410
	Oct	920	570	1,500	1,500
	Nov	960	580	1,530	1,510
	Dec	960	580	1,540	1,570
2012	Jan	1,050	650	1,700	1,620
	Feb	1,130	690	1,820	1,670
	Mar	1,100	700	1,810	1,760
	Apr	1,060	680	1,740	1,760
	May	1,040	680	1,720	1,800
	Jun	1,020	700	1,720	1,760
	Jul	1,020	720	1,740	1,750

		Male	Female	Total	Seasonally adjusted total
2012	Aug	1,020	650	1,670	1,710
	Sep	970	650	1,610	1,680
	Oct	1,020	700	1,720	1,740
	Nov	1,090	730	1,820	1,820
	Dec	1,100	740	1,840	1,870
	2013	Jan	1,210	810	2,020
Feb		1,210	820	2,030	1,880
Mar		1,230	820	2,050	1,980
Apr		1,140	800	1,930	1,910
May		1,080	800	1,880	1,930
Jun		1,040	810	1,850	1,910
Jul		1,030	840	1,860	1,900
Aug		990	820	1,820	1,890
Sept		1,000	800	1,810	1,920
Oct		1,040	770	1,800	1,860
Nov		1,060	750	1,810	1,820
Dec		1,030	720	1,750	1,800
2014	Jan	1,090	770	1,860	1,780
	Feb	1,080	780	1,860	1,710
	Mar	980	760	1,730	1,650
	Apr	900	720	1,610	1,600
	May	840	700	1,530	1,590
	Jun	790	710	1,510	1,580
	Jul	780	740	1,520	1,570
	Aug	780	720	1,510	1,580
	Sep	750	700	1,450	1,540
	Oct	760	670	1,430	1,480
	Nov	780	680	1,450	1,460
	Dec	760	680	1,440	1,460
2015	Jan	790	700	1,490	1,380
	Feb	870	760	1,620	1,450
	Mar	820	740	1,560	1,440

⁸ Numbers are rounded independently to the nearest 10; hence components may not sum to totals.